

Service Information

MACHINE TYPE : FS2(7" & 15") type feeder, FT type feeder

No: SI0804001E-000

CLASSIFICATION : Installation

ISSUED DATE: 2008-04-10

FS2 (7"/15") & FT Feeder: How to set the taped components

This document describes the procedures; from the unpacking process of the FS2 and FT feeder to setting the taped components to it.

1. Identifying reel setting parts

1.1 FS2 (7 inch) type



Fig 1

1.2 FS2 (15 inch) type

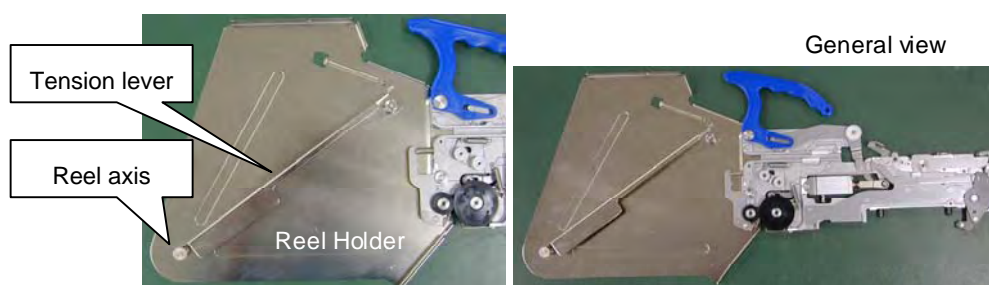


Fig 2

1.3 FT type

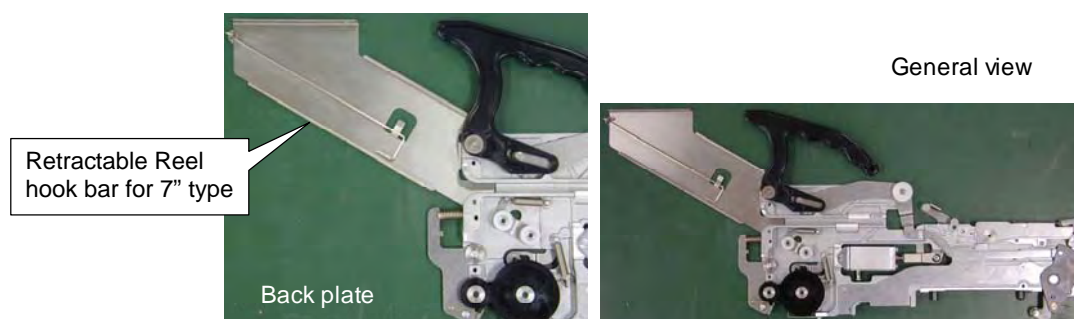


Fig 3

* Retractable Reel hook bar for 15" type is optional extra.

Service Information

2. Procedures to set the reel holder

2.1 FS2 (7 inch) type

Set the tape in the reel holder pocket.

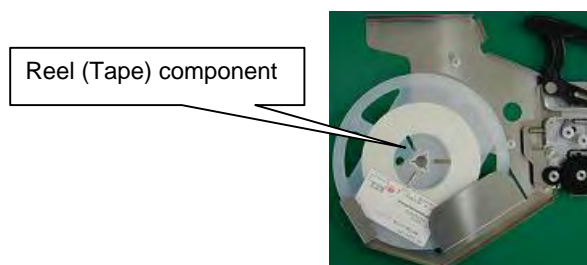


Fig 4

2.2 FS2 (15 inch) type

Set the tape in the reel axis, and then set the tension lever.

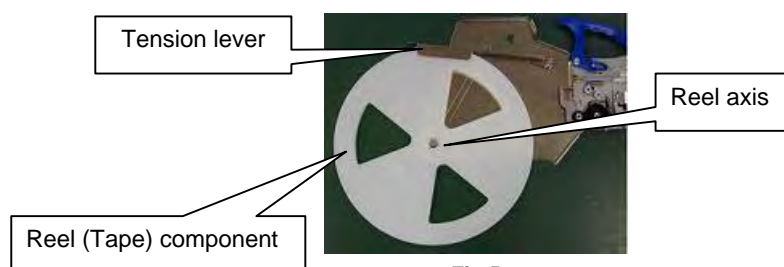


Fig 5

2.3 FT type

Release the reel hook bar from the reel holder.

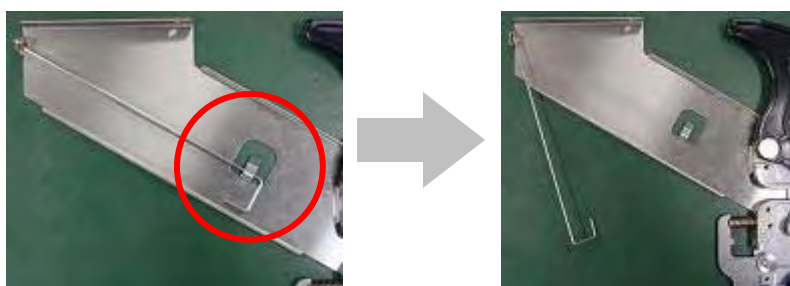


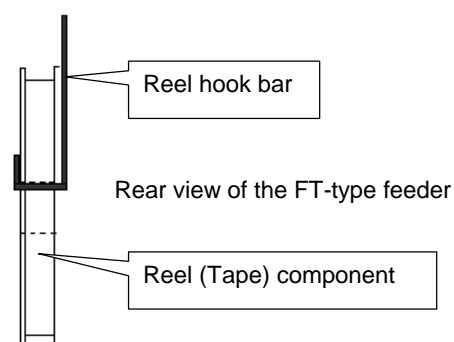
Fig 6

* Retractable Reel hook bar for 15" type is optional extra.

Hook the released hook bar on the center hole of the tape reel.



Fig 7



Service Information

3. Procedures to set the tape component

1. Put the reel in the pocket of the reel holder and pull out the tape somewhat.
2. While lifting the handle lever up, push down the locking lever in the tip of the tape guide. And then, lift the tape guide up.

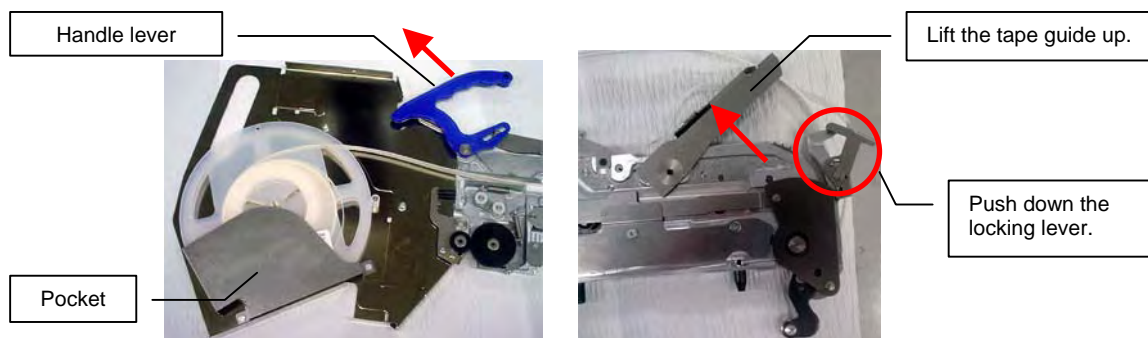


Fig 8

3. Feed the top cover tape through the tape guide in order of 1 to 5 described in Fig.3.

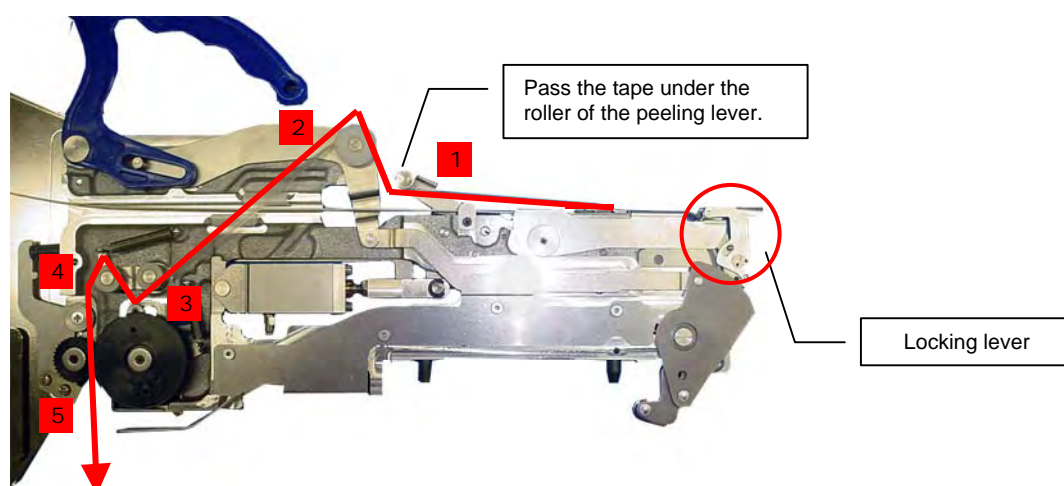


Fig 9

4. Push down the tape guide and get the locking lever back.(Fig 9) When lowering the tape guide, set the carrier tape so that the gear can engage with the holes in the carrier tape.
5. Pull down the top cover tape until the two rollers become level.(Fig 10 Left)
6. Push the bending part of the peeling lever(Fig 10 Right) to feed the component to the pickup position.

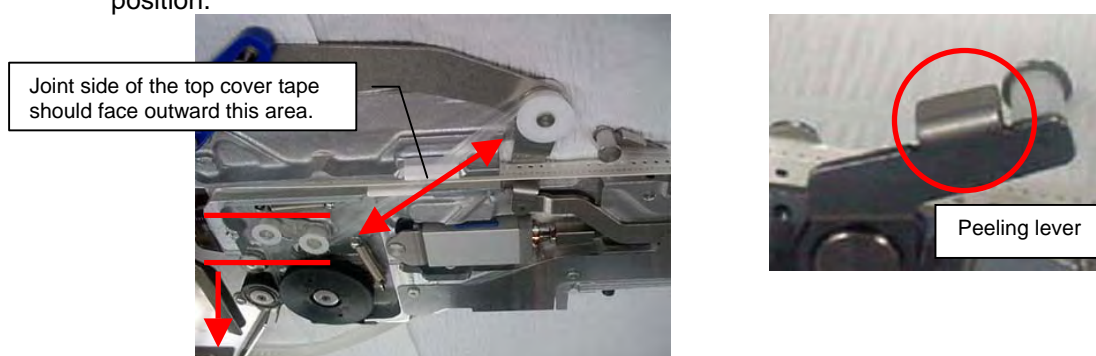


Fig 10